



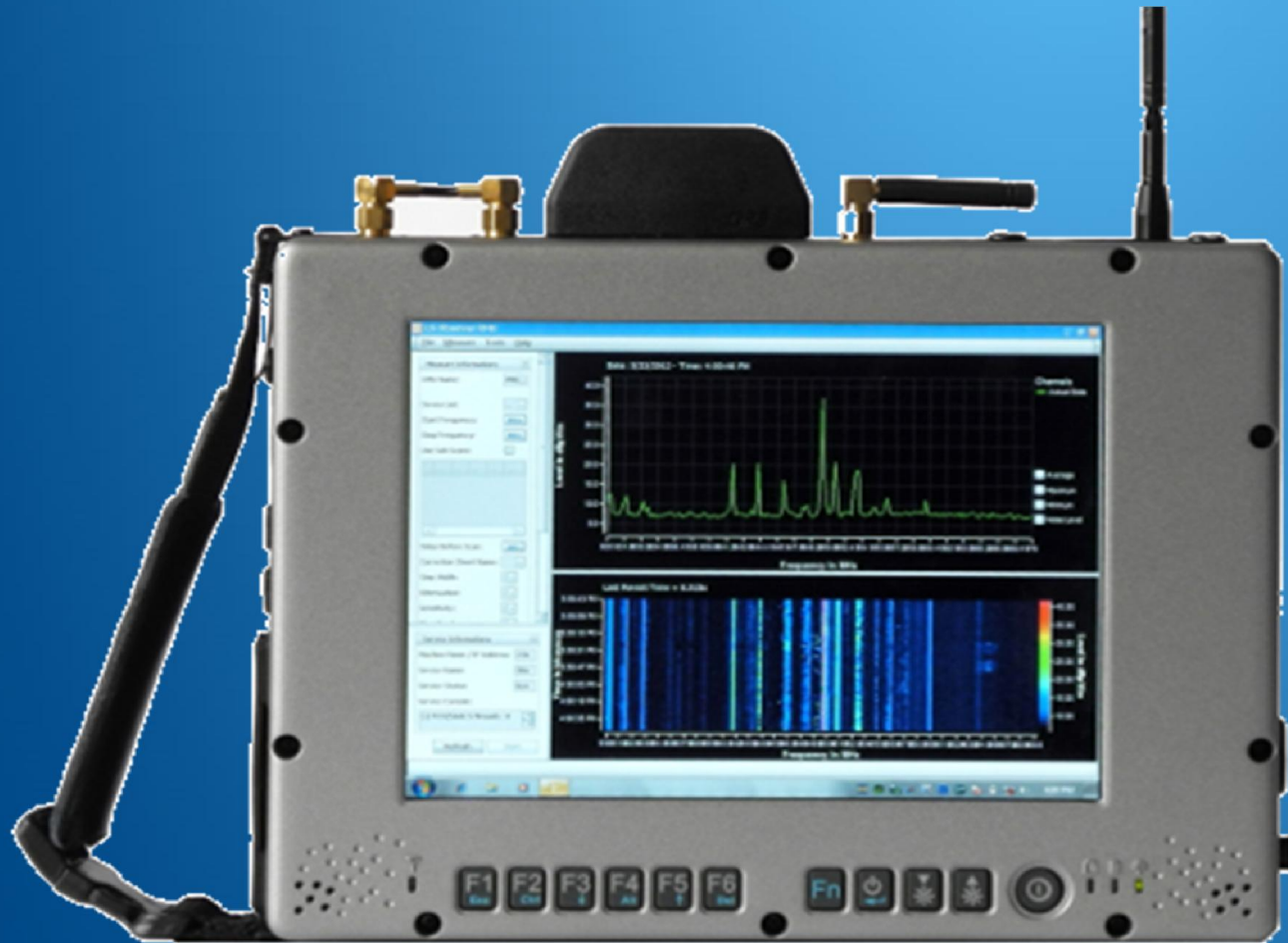
# Spectrum Monitoring System

Melbourne, FL  
March 10-11, 2015

10-11 March, 2015

CONFIDENTIAL - AFC Membership Only

# LS Telcom Observer



10-11 March, 2015

CONFIDENTIAL - AFC Membership Only

# Capabilities



- Ability to continuously monitoring the entire AOC spectrum
- Ability to filter specific frequencies or bandwidth
- Ability to triangulate rogue transmissions
- Ability to remotely access data at home office
- Ability to Demodulate, listen and record transmissions



# MCO Data 127.000 MHz – 138 MHz (11 Nov 2014)



Load - PMU\_100

Available Measures:

Station (RMU) Name: PMU\_100

Type Of Data: RawData

Result List:

Name
MCO 11112014-6 Raw

Result 1 of 1

Result Informations

Search Criteria:

Start Date: 11/11/2014

Stop Date: 11/11/2014

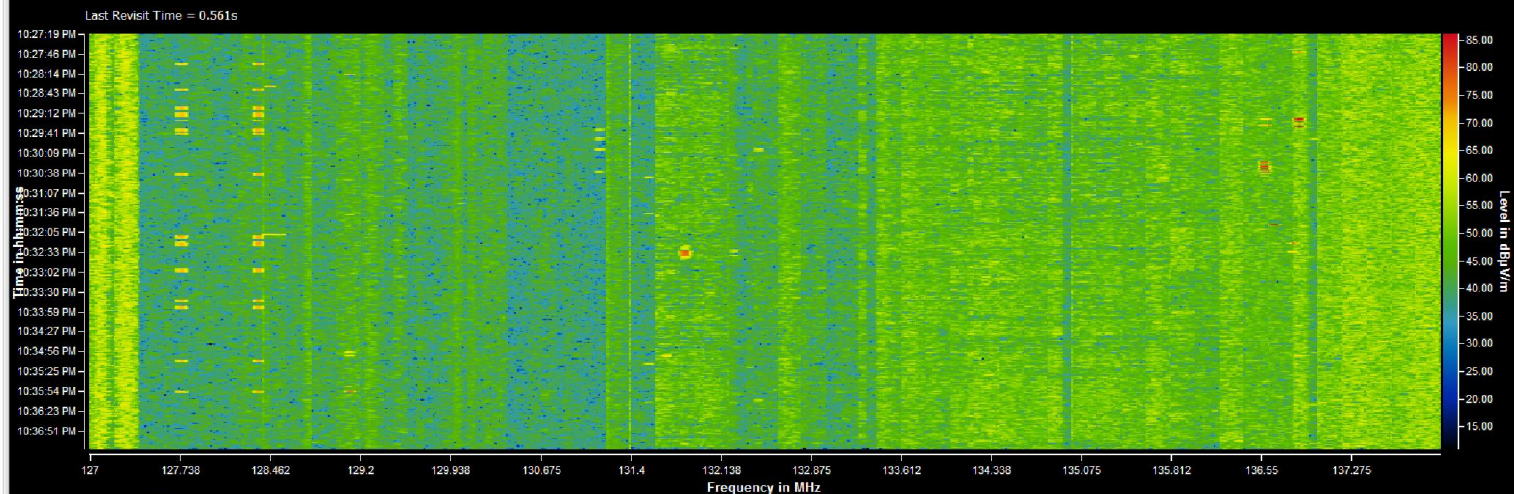
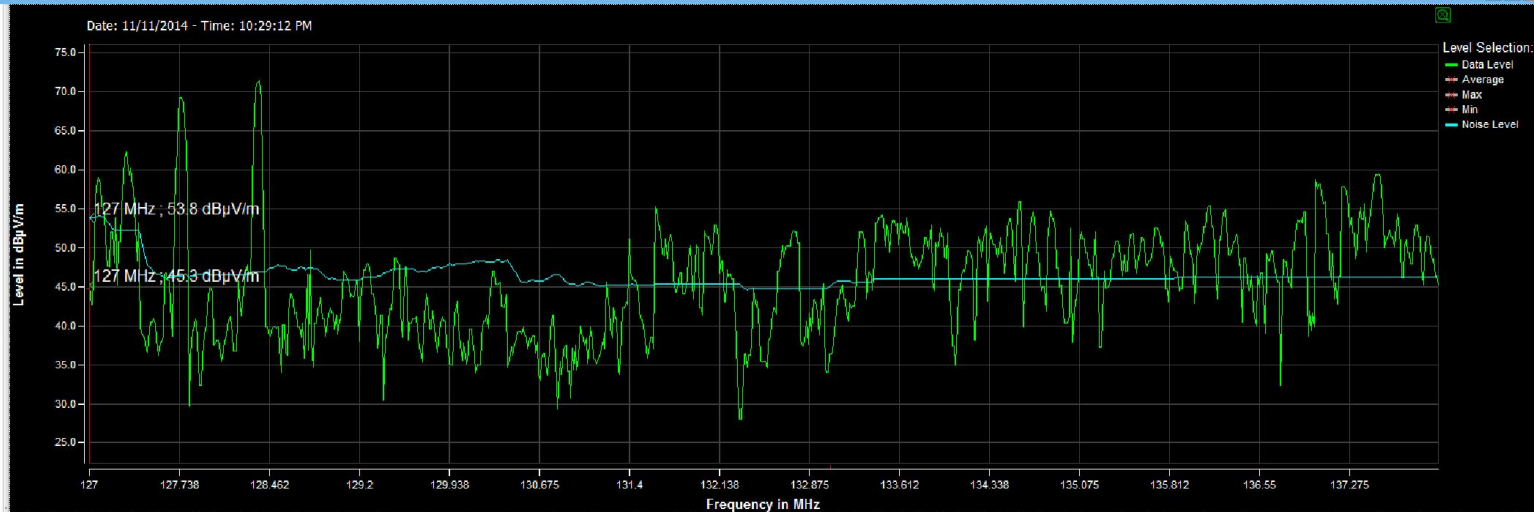
Start Time: 10:27:17 PM

Stop Time: 10:37:17 PM

Start Frequency: 127 MHz

Stop Frequency: 138 MHz

Export Load Cancel





Measure Informations

RMU Name: RMU\_USA

Device List: LS-Standard

Use Sub Scans: ☐

Antenna Start F... Stop F... Delay Correc...

Start Frequency: 80 MHz

Stop Frequency: 110 MHz

Delay Before Scan: 0 sec

Correction Sheet Name:

Step Width: 12.5 kHz

Attenuation: 0

Sensitivity: 2

MixerBand: 0

Preamplifier: ON

Measure Name: start from CCU

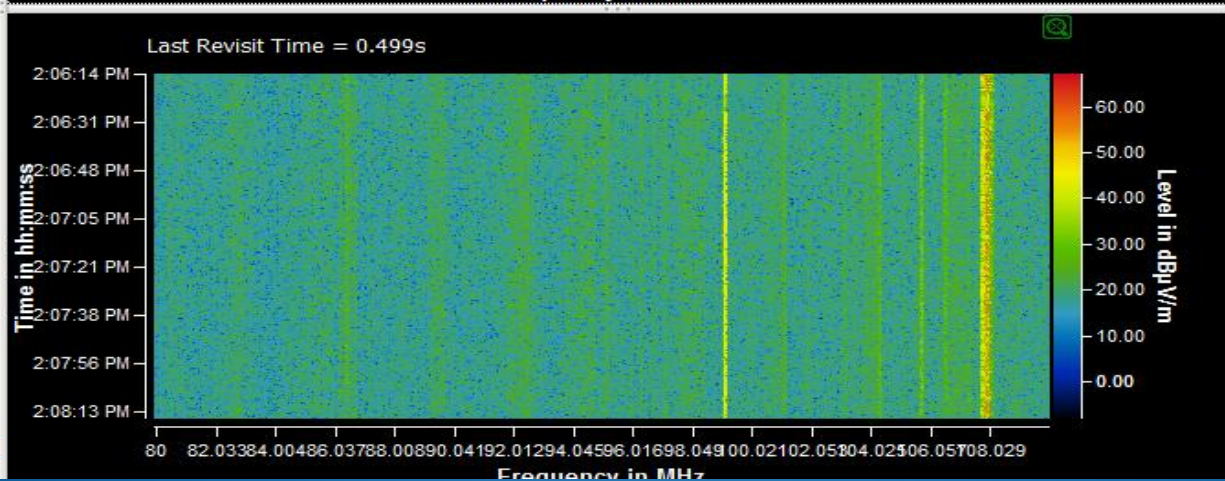
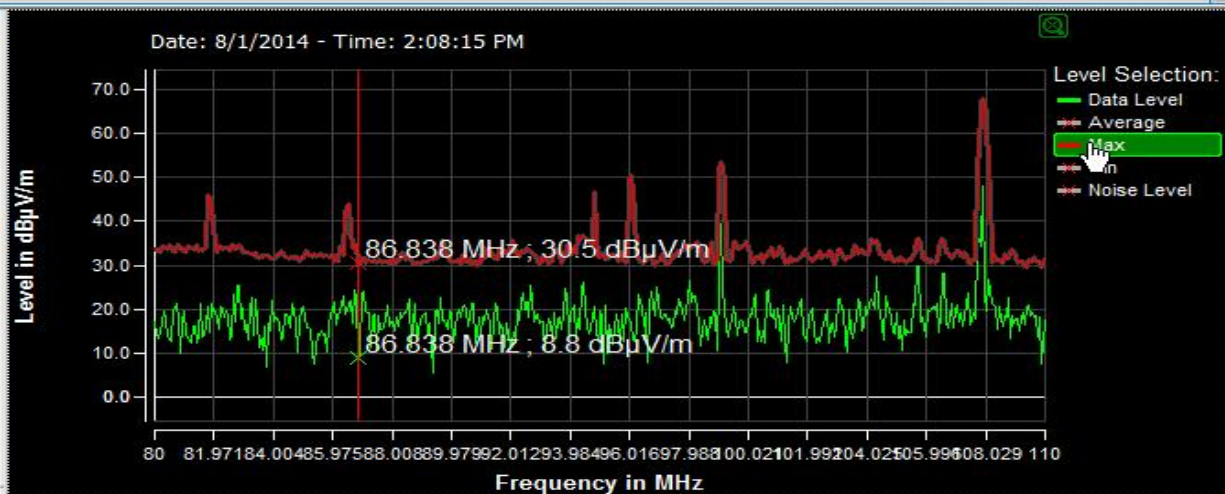
Start Date Time: 8/1/2014 2:33:08 PM

Stop Date Time: 8/1/2014 2:33:08 PM

Endless Measure: ☒

Display Live Data: ☒

Start Stop



## Maximum Signal level





Measure Informations

RMU Name: RMU\_USA

Device List: LS-Standard

Use Sub Scans: ☐

Antenna Start F... Stop F... Delay Correc...

Start Frequency: 80 MHz

Stop Frequency: 110 MHz

Delay Before Scan: 0 sec

Correction Sheet Name:

Step Width: 12.5 kHz

Attenuation: 0

Sensitivity: 2

MixerBand: 0

Preamplifier: ON

Measure Name: start from CCU

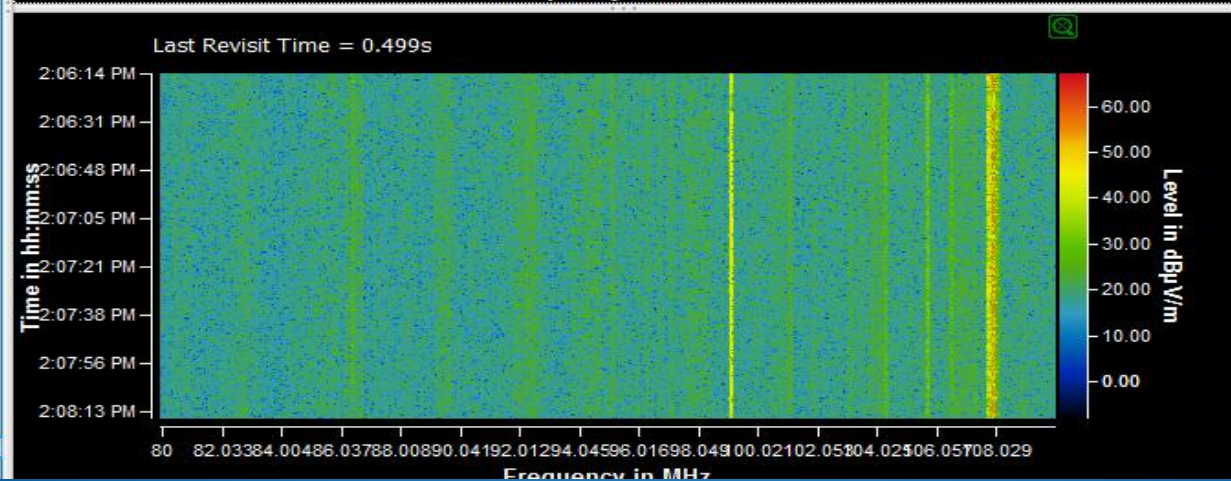
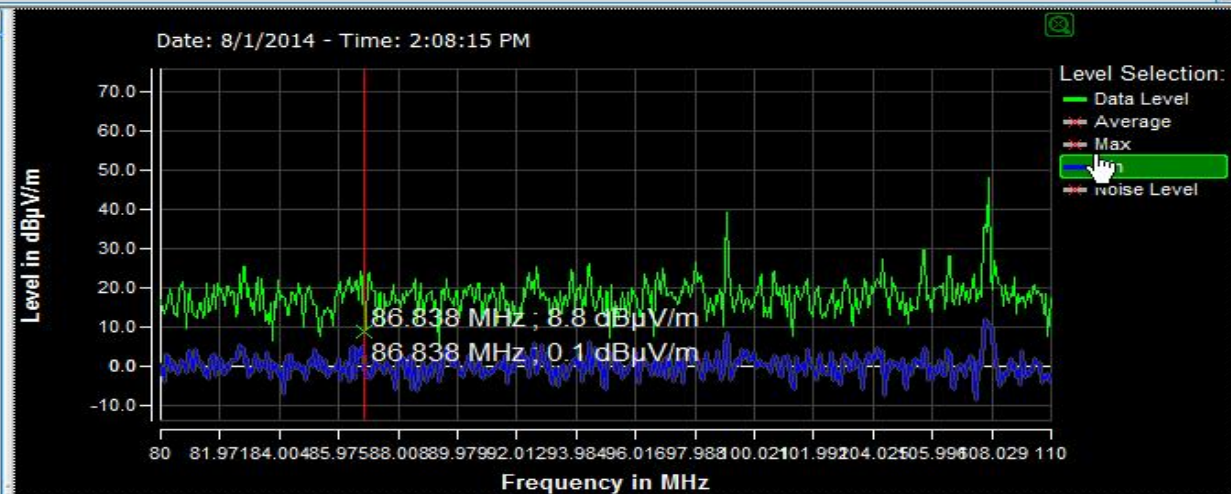
Start Date Time: 8/1/2014 2:33:10 PM

Stop Date Time: 8/1/2014 2:33:10 PM

Endless Measure: ☒

Display Live Data: ☒

Start Stop



## Minimum Signal Level

10-11 March, 2015

CONFIDENTIAL - AFC Membership Only

# Working with Live Data

- 1. Measurement parameters
- 2. Controls
- 3. Spectrogram
- 4. Strength Over Time
- 5. Waterfall
- 6. Compass chart

